

BLINDNIETMUTTERN FLACHKOPF

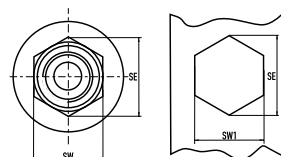
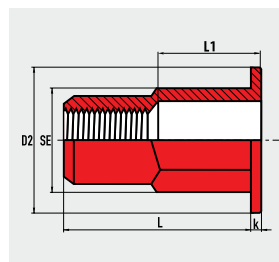
TEILSECHSKANTSCHAFT,
SCHAFTENDE OFFEN

BLIND RIVET NUTS (INSERTS) FLAT HEAD

SEMI-HEXAGONAL SHANK,
OPEN TYPE

ECROUS À SERTIR (INSERTS) TÊTE PLATE

TIGE HEXAGONALE RÉDUITE,
EXTRÉMITÉ OUVERTE



Edelstahl A4 [AISI 316]
Stainless steel A4 [AISI 316]
Acier inox A4 [AISI 316]

M 5

SW = 7,0 mm
SW1 = 7,1 mm
SE = 7,9 mm
D2 = 10,3 mm
k = 1,0 mm

7,0 x 13,5 mm	0,5 - 3,0 mm	75505 30200	10000 N	6,0 Nm	250	5000 *

M 6

SW = 9,0 mm
SW1 = 9,1 mm
SE = 10,2 mm
D2 = 12,3 mm
k = 1,5 mm

9,0 x 15,5 mm	0,5 - 3,0 mm	75506 30200	15000 N	10,0 Nm	250	3000

M 8

SW = 11,0 mm
SW1 = 11,1 mm
SE = 12,4 mm
D2 = 14,3 mm
k = 1,5 mm

11,0 x 17,5 mm	0,5 - 3,0 mm	75508 30200	27000 N	24,0 Nm	250	2000

M 10

SW = 13,0 mm
SW1 = 13,1 mm
SE = 14,7 mm
D2 = 16,3 mm
k = 2,0 mm

13,0 x 22,0 mm	1,0 - 4,0 mm	75510 30200	37000 N	48,0 Nm	250	1500 *

* Verfügbarkeit auf Anfrage Availability on request Disponibilité sur demande

Änderungen vorbehalten Subject to modifications Sous réserve de modifications