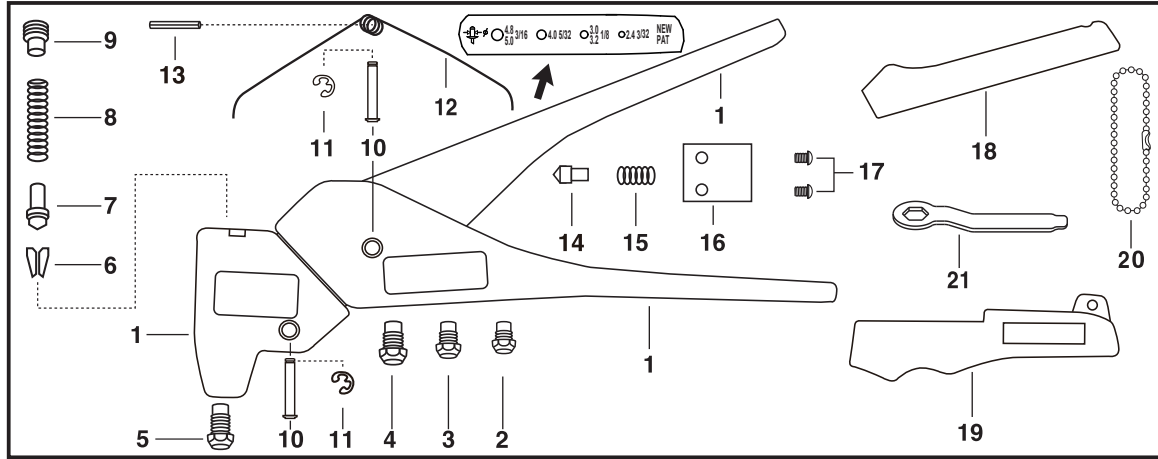




GO-360 Patented 360° Swivel Ratchet-Head™ HAND RIVET TOOL

With RIVET SIZE HOLE GAUGE™

■ PARTS LIST



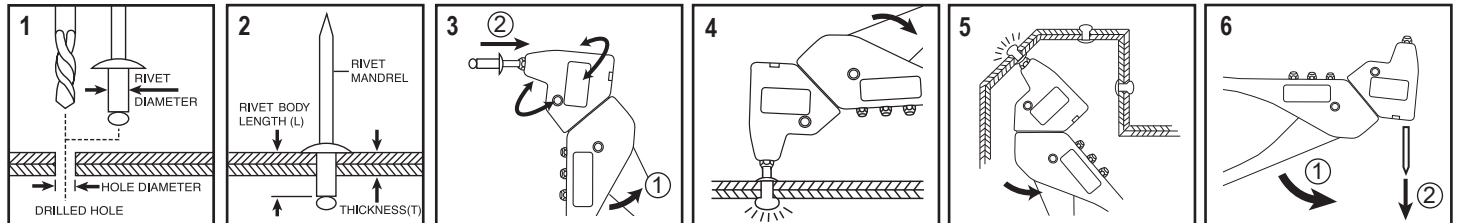
■ PATENTS

US 8,650,731
 US D700,491
 US 6,588,246
 EUIPO 001746637-0003
 GERMANY
 20 2010 008 658.2
 GERMANY 202 09 666.1
 RUSSIA 102549
 AUSTRALIA 099203542
 TAIWAN M 385417
 TAIWAN 193557
 中国 实用新型专利
 ZL 2010 2 0148358.6
 中国 实用新型专利
 ZL 01 2 31789.6

NO.	PART NO.	PART NAME	NO.	PART NO.	PART NAME
1	GO-360-01	BODY (3-in-1)	12	GO-360-12	TORSION SPRING
2	GO-360-02	NOSEPIECE, 3/32" or 2.4mm	13	GO-360-13	TORSION SPRING PIN
3	GO-360-03	NOSEPIECE, 1/8" or 3.0/3.2mm	14	GO-360-14	SLIDING GEAR LOCK
4	GO-360-04	NOSEPIECE, 5/32" or 4.0mm	15	GO-360-15	SLIDING GEAR LOCK SPRING
5	GO-360-05	NOSEPIECE, 3/16" or 4.8/5.0mm	16	GO-360-16	PLATE
6	GO-360-06	JAWS (2-PC TYPE)	17	GO-360-17	BOLT, for PLATE (2 PCS/SET)
7	GO-360-07	JAWS PUSHER	18	GO-360-18	UPPER GRIP
8	GO-360-08	JAWS PUSHER SPRING	19	GO-360-19	LOWER GRIP
9	GO-360-09	RETAINING SCREW	20	GO-360-20	BEAD CHAIN LOCK
10	GO-360-10	FULCRUM PIN	21	GO-360-21	WRENCH
11	GO-360-11	SNAP RING			

NOTES: Please order parts by Part Number and Part Name. Keep all moving parts oiled.

■ OPERATION INSTRUCTIONS



1. Select appropriate Blind Rivet for application, punch or drill same size or a little bigger (0.004", or 0.1mm) hole through work pieces to be fastened.

2. Select Rivet Body Length (L) based on the combined thickness (T) of work pieces to be fastened. It is suggested $L - T \geq 0.16"$ or 4.0mm.

3. Choose the correct size of Working Nosepiece by using the RIVET SIZE HOLE GAUGE™. Open Tool Handles fully ① and insert Rivet Mandrel all the way into Tool Working Nosepiece ②.

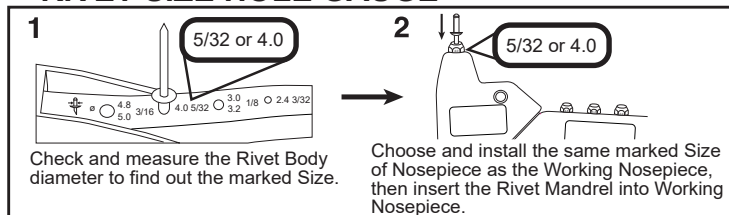
4. Insert Rivet Body into the drilled hole completely. Squeeze Tool Handles until Rivet Mandrel breaks off. If more than one squeeze is required, open Tool Handles fully and squeeze again.

5. The Patented 360° Swivel Ratchet-Head™ is for easy and precise Riveting job in narrow and awkward places at any angle.

6. Finally open Tool Handles fully ① to eject Spent Mandrel ② from Tool, either from Working Nosepiece or from another side.

- For SAFETY WORK, ALWAYS WEAR SAFETY GOGGLES.
- Tool must be clear off all Spent Mandrels before setting next Blind Rivet.

■ HOW TO USE THE PATENTED RIVET SIZE HOLE GAUGE™



■ HOW TO CHANGE JAWS ETC. PARTS

1. Close Tool Handles completely ①.
2. Remove Retaining Screw with Wrench ②, then remove Jaw Pusher Spring, Jaw Pusher and Jaws from Jaw Case.
3. Clean or replace Jaws, lubricating outside of Jaws with light machine oil before re-assembly.
4. Reverse the above steps to reassemble, making sure that the bevelled end of Jaw Pusher fits into the bevel provided by the Jaws.

■ RIVETING CAPACITY

Rivet Diameter	Rivet Diameter			
	Ø 3/32"	Ø 1/8"	Ø 5/32"	Ø 3/16"
Aluminum	●	●	●	●
Steel	●	●	●	●
Stainless Steel / Inox	●	●	●	●

