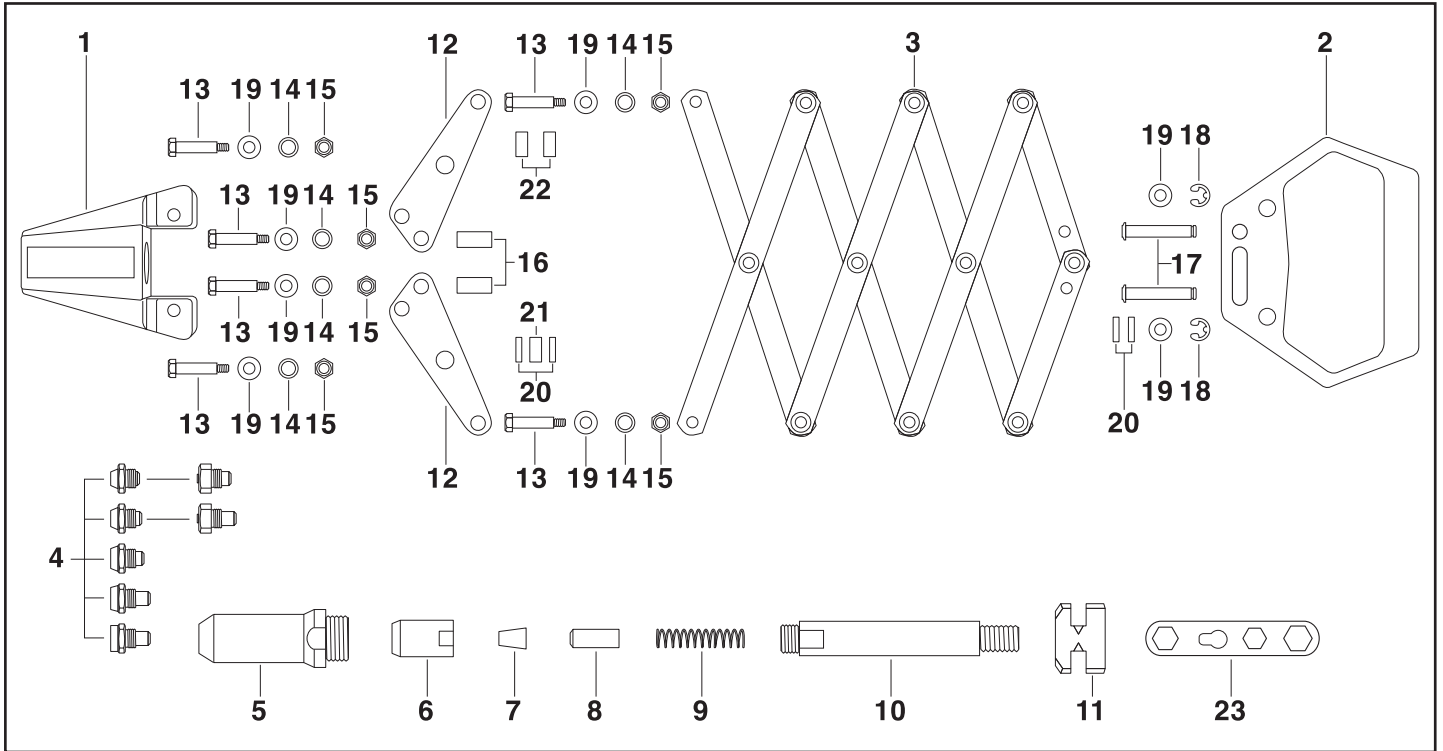


■ PARTS LIST



No.	Part No.	Part Name
1	GO-25-SN-01	Body
2	GO-25-SN-02	Handle
3	GO-25-SN-03	Lattice
● 4-32	GO-25-SN-0432	Nosepiece, for $\varnothing 3.0/3.2\text{mm}$ or 1/8" Rivet
● 4-40	GO-25-SN-0440	Nosepiece, for $\varnothing 4.0\text{ mm}$ or 5/32" Rivet
● 4-48	GO-25-SN-0448	Nosepiece, for $\varnothing 4.8/5.0\text{ mm}$ or 3/16" Rivet
● 4-60	GO-25-SN-0460	Nosepiece, for $\varnothing 6.0\text{ mm}$ Rivet
● 4-64	GO-25-SN-0464	Nosepiece, for $\varnothing 6.4\text{ mm}$ or 1/4" Rivet
● 4-48M	GO-25-SN-0448M	Nosepiece, for $\varnothing 4.8\text{ mm}$ or 3/16" * Monobolt Rivet
● 4-64M	GO-25-SN-0464M	Nosepiece, for $\varnothing 6.4\text{ mm}$ or 1/4" * Monobolt Rivet
5	GO-25-SN-05	Head
6	GO-25-SN-06	Jaw Case

No.	Part No.	Part Name
● 7	GO-25-SN-07	Jaws, 3-pc type
● 8	GO-25-SN-08	Jaw Pusher
● 9	GO-25-SN-09	Jaw Pusher Spring
10	GO-25-SN-10	Traction Sleeve
11	GO-25-SN-11	Traction Seat
12	GO-25-SN-12	Arm
13	GO-25-SN-13	Bolt, L215
14	GO-25-SN-14	Washer, $\varnothing 10 \times 5$
15	GO-25-SN-15	Nylon Nut
16	GO-25-SN-16	Spacer, L160
17	GO-25-SN-17	Pin, L343
18	GO-25-SN-18	Snap Ring
19	GO-25-SN-19	Washer, $\varnothing 12 \times 6$
20	GO-25-SN-20	Spacer, L22
21	GO-25-SN-21	Spacer, L60
22	GO-25-SN-22	Spacer, L52
23	GO-25-SN-23	Wrench, W-4

■ REMARKS:

- 1) ● means Wearing Parts.
 - 2) Order example: GO-25-SN-07 3-pc type Jaws, 20 sets.
 - 3) GO-25-N Lazy Tong Rivet Tool also can set $\varnothing 4.8\text{ mm}$ (3/16") & $\varnothing 6.4\text{ mm}$ (1/4") * Monobolt Rivet. The special * Monobolt Nosepieces (GO-25-SN-0448M, GO-25-SN-0464M) to set *
- Monobolt Rivets are available on request. The * Monobolt is a registered trademark of Avdel.

Lazy Tong Rivet Tool

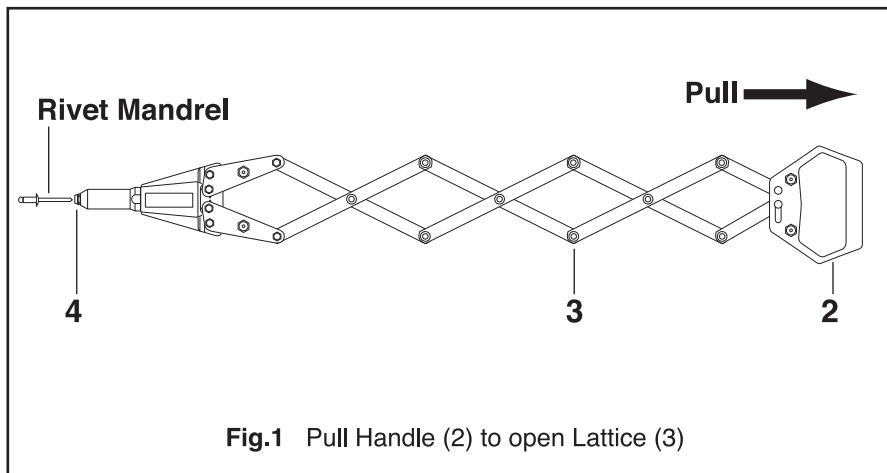


Fig.1 Pull Handle (2) to open Lattice (3)

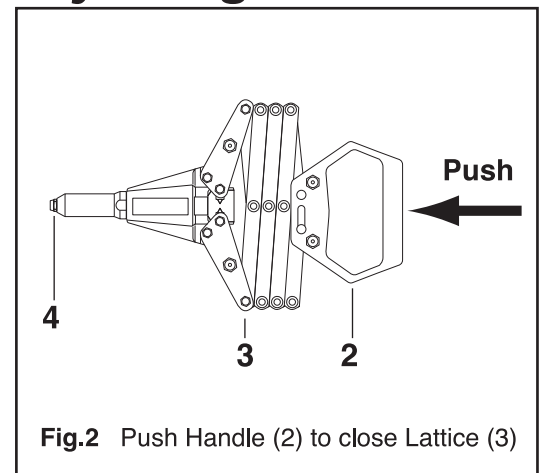


Fig.2 Push Handle (2) to close Lattice (3)

■ HOW TO OPERATE GO-25-SN LAZY TONG RIVETING TOOL:

- 1) Pull Handle (2) to open Lattice (3) completely (Fig.1), insert Rivet Mandrel all the way into Tool Nosepiece (4), then insert Rivet Head into the prepared hole completely.
- 2) Push Handle (2) to close Lattice (3) completely (Fig.2) until Rivet Mandrel breaks off. If more than one squeeze is required, pull Handle (2) fully and push again.
- 3) Pull Handle (2) to open Lattice (3) completely (Fig.1) to eject spent Rivet Mandrel from Tool.

■ HOW TO CLEAN AND CHANGE JAWS (7), JAW PUSHER (8) AND JAW PUSHER SPRING (9):

- 1) If Jaws (7) can not bite or slip on the Rivet Mandrel, it is suggested to clean teeth of Jaw or change new Jaws (7). when Handle (2) is fully pulled to open Lattice (3) (Fig.1) but Jaws (7) are still not open completely, it is suggested to check and change new Jaw Pusher (8), Jaw Pusher Spring (9) and Nosepiece (4).
- 2) Push Handle (2) to close Lattice (3) completely (Fig.2), unscrew Head (5) and Jaw Case (6), take out Jaws (7), Jaw Pusher (8) and Jaw Pusher Spring (9) to clean or change them.
- 3) Lubricate thin oil on Jaws' outside, then reverse above steps to reassemble.

■ HOW TO CHANGE NOSEPIECE (4):

Push Handle (2) completely to close Lattice (3) firstly (Fig.2), use Wrench (23) to unscrew Nosepieces (4), replace and tighten Nosepieces (4) with Wrench (23).



- For SAFETY WORK, ALWAYS WEAR SAFETY GOGGLES.
- Tool must be clear off all Spent Mandrels before setting next Rivet.

SAFETY GOGGLES

