



**Leading Professional
Riveting Service Provider**

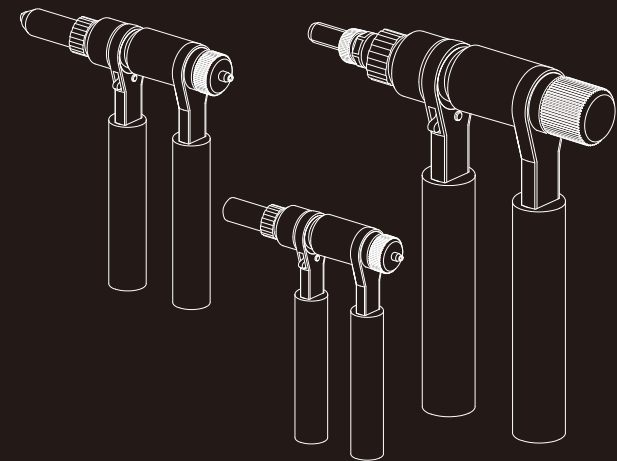
GO-12-N for Rivet Nuts

GO-12-R for Blind rivets

GO-12-P for Pin and collars

〔Operating Manual〕

Quality The First Time



GOEBEL GMBH
MÜHLENSTRASSE 2-4
D-40699 ERKRATH
PHONE: +49 (0)211 24 5000 0
SALES@GOEBEL-GROUP.COM

Leading Professional Riveting Service Provider

GO-12-N / GO-12-R / GO-12-P Catalogue

3	Summarize
4	GO-12-N Explosive drawing and parts list
5	GO-12-N Parameters and packaging
6	GO-12-N How to operate
8	GO-12-R Explosive drawing and parts list
9	GO-12-R Parameters and packaging
10	GO-12-R How to operate
12	GO-12-P Explosive drawing and parts list
13	GO-12-P Parameters and packaging
14	GO-12-P How to operate
15	Troubleshooting
16	Warranty and Services
17	Services

Brand new ratchet hand tool Series

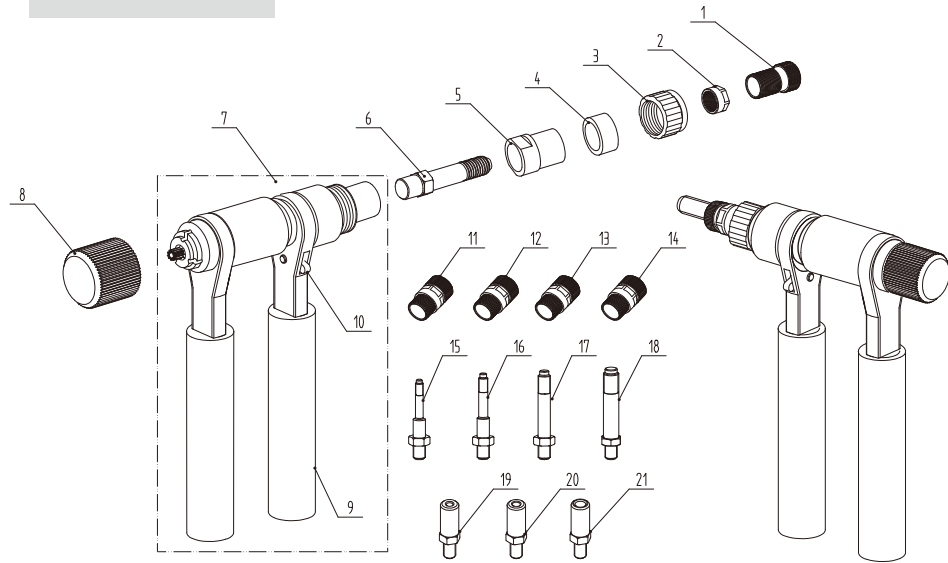
Brand new ratchet hand tools series, which are GO-12-N for rivet nuts, GO-12-R for blind rivets and GO-12-P for Pin and collars.

Equips internal ABS anti-stuck function, highly reliable; easy operation. GO-12-N and GO-12-R equips colorful nosepieces, excellent of recognition. GO-12-P, the jaws set, with integration structure, a good solution for easy to lost during changing parts, and prevention for mix up of different parts.

Due to new technologies, compare to similar products, saving 60% power, 4 times more sufficient, loading and releasing speed to fasteners is 4.6 times faster.

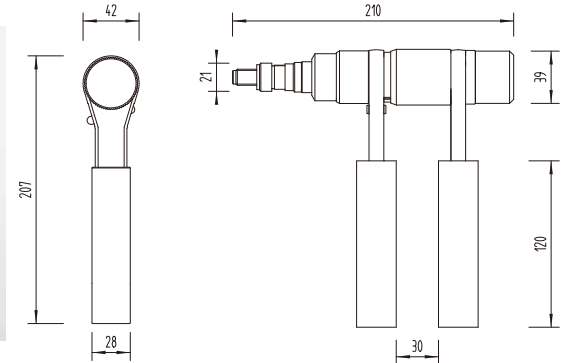
Tools are designed by ergonomics, excellent and highly simplified appearance. The packaging is environmental protection material. The tools are economical solution for fastening technology.

GO-12-N



No.	Art code	Description	Qty/tool	No.	Art code	Description	Qty/tool
1	Z21007H00	Nosepiece assembly M12	1	12	Z21010H00	Nosepiece assembly M6	1
2	L23051H00	Counter nut	5	13	Z21009H00	Nosepiece assembly M8	1
3	L23002H00	Screw cover	1	14	Z21008H00	Nosepiece assembly M10	1
4	L23003H00	Rubber ring	1	15	L23037H00	Mandrel M5	1
5	L23001H00	Nose pedestal	1	16	L23036H00	Mandrel M6	1
6	L23033H00	Mandrel M12	1	17	L23035H00	Mandrel M8	1
7	Z21101H00	Body assembly	1	18	L23034H00	Mandrel M10	1
8	Z21102H00	Knob assembly	1	19	L23042H00	Rivbolt puller M5	1
9	L20475H00	Black grip	2	20	L23041H00	Rivbolt puller M6	1
10	L23025H00	Switch	1	21	L23040H00	Rivbolt puller M8	1
11	Z21011H00	Nosepiece assembly M5	1	*Quick wear parts in shadow, No. 19-21 are optional parts			

GO-12-N



Standard Equipment:



Parameters:

Stroke: 8mm

All material rivet nuts
M3-M12

N.W. per tool: 1Kg

Qty/Master ctn: 10pcs

Master Ctn Dimension:
54x48x27cm

G.W. Ctn: 15.2Kg

Optional Parts:

M5,M6,M8---Rivbolt puller

M3,M4,M5---Mandrel

UNC mandrel/puller are
available for order

How to operate



Put the nut on the mandrel, clockwise screw the nut on the mandrel



Adjust to ensure that all threads are meshed, and the front end of the threaded rod is slightly protruding, and the rivet nut is stick to the front side.



Notice: Switch down



Move the handle for setting nut



After setting, turn switch up, ready for releasing the nut



Inward push the handles, for releasing the nut



Counter clockwise turn the knob to release the nut



One operation of setting done

How to change quick ware parts



Counter clockwise turn the screw cover and mandrel



Unscrew the nosepiece from screw cover



Move backwards the cover for changing mandrels



Unscrew the nosepiece from screw cover



Put mandrel and nosepieces to the screw cover



Move backwards the cover for changing mandrels



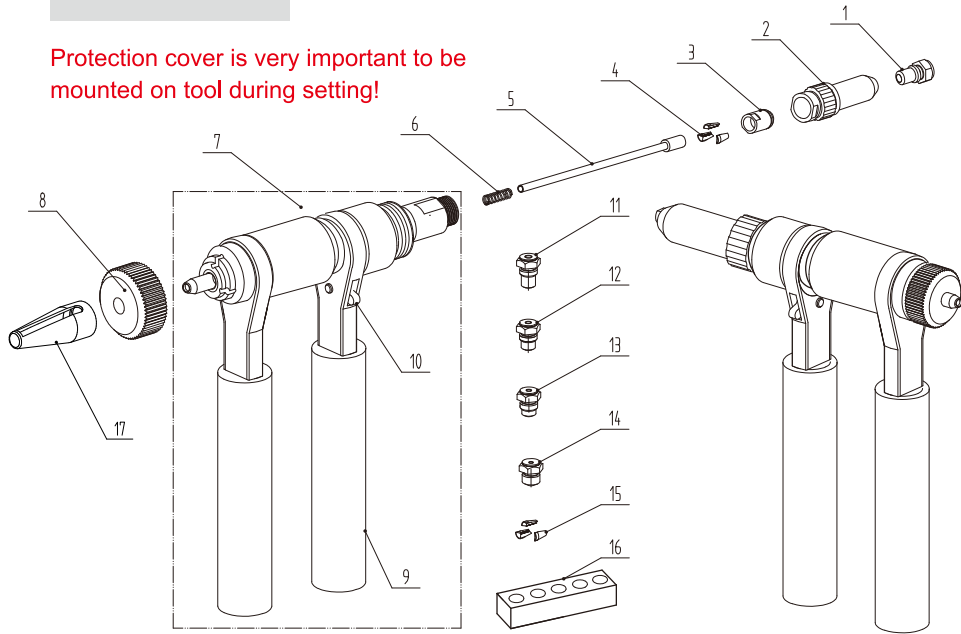
Clockwise turn the screw cover and mandrel for install onto the body



Changing complete

GO-12-R

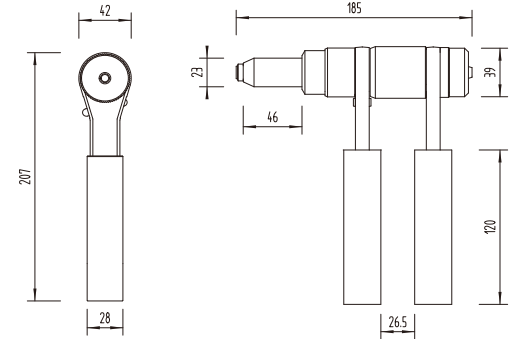
Protection cover is very important to be mounted on tool during setting!



No.	Art code	Description	Qty/tool	No.	Art code	Description	Qty/tool
1	Z21014H00	Nosepiece assembly(6.4)	1	9	L20475H00	Black grip	2
				10	L23025H00	Switch	1
2	Z21103H00	Front sleeve	1	11	Z21018H00	Nosepiece assembly(6.0)	1
3	L23053H00	Clamping sleeve	1	12	Z21019H00	Nosepiece assembly(4.8/5.0)	1
4	Z20320H00	Primary 3jaws	1	13	Z21020H00	Nosepiece assembly(4.0)	1
5	Z40401H00	Push pin	1	14	Z21021H00	Nosepiece assembly(3.2)	1
6	L40111H00	Push pin spring	1	15	Z40102H00	3 jaws	1
7	Z21104H00	Body assembly	1	16	B01216H00	Packaging for nosepiece	1
8	L23056H00	Rear cover	1	17	L62009H00	Protection cover	1

*parts in shadow are quick-wear parts

GO-12-R



Standard Equipment:



Black \varnothing 6.4

White \varnothing 6.0

Red \varnothing 4.8/5.0

Blue \varnothing 4.0

Purple \varnothing 3.2

3-jaws set

Optional part:

Yellow \varnothing 2.4

Parameters:

Stroke: 16mm

All material blind rivets

N.W per tool: 1Kg

Qty/master Ctn: 10pcs

Master Ctn dimension: 54×48×27cm

G.W. Ctn: 14Kg

How to operate:

Load the rivet on tool, turn the switch down



Before release the rest mandrel, turn the switch on



Pull open / join the handles for setting rivet



One hand clockwise turn the handle



Until the rivet break, then, stop moving the handle



Pour-out the rest mandrel



How to change Accessories

① Change nosepieces

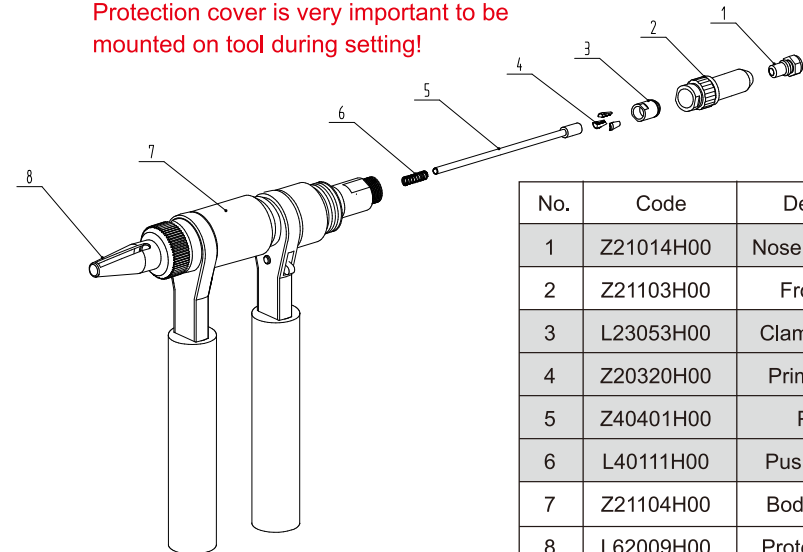
- initial position, turn the switch down like show on picture ①
- Turn the handle in reverse clockwise by single hand to automatic fixation
- Change nosepieces



② Change other parts:

During change, please mount/un-mount parts in accordance to below numbers

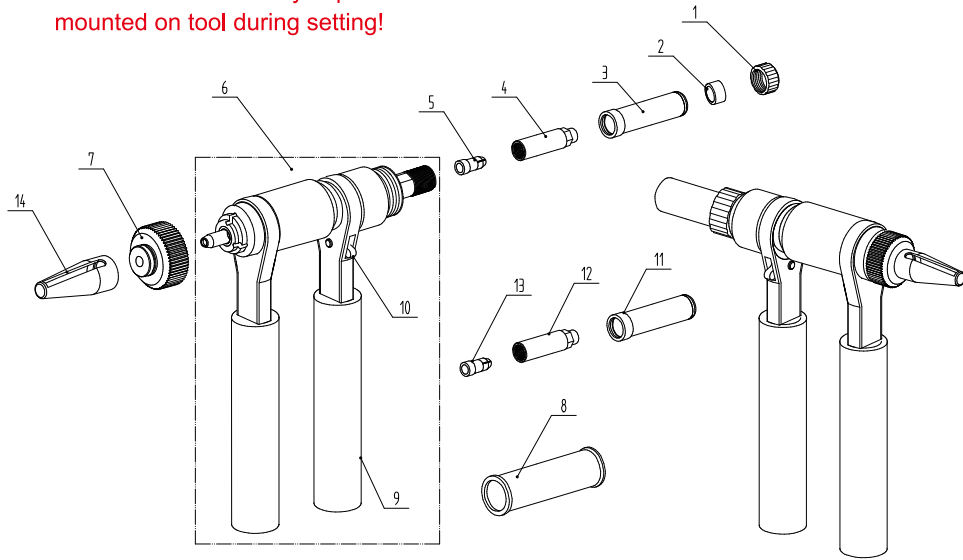
Protection cover is very important to be mounted on tool during setting!



No.	Code	Description
1	Z21014H00	Nosepiece (6.4)
2	Z21103H00	Front sleeve
3	L23053H00	Clamping sleeve
4	Z20320H00	Primary 3-jaws
5	Z40401H00	Push pin
6	L40111H00	Push pin spring
7	Z21104H00	Body assembly
8	L62009H00	Protection cover

GO-12-P

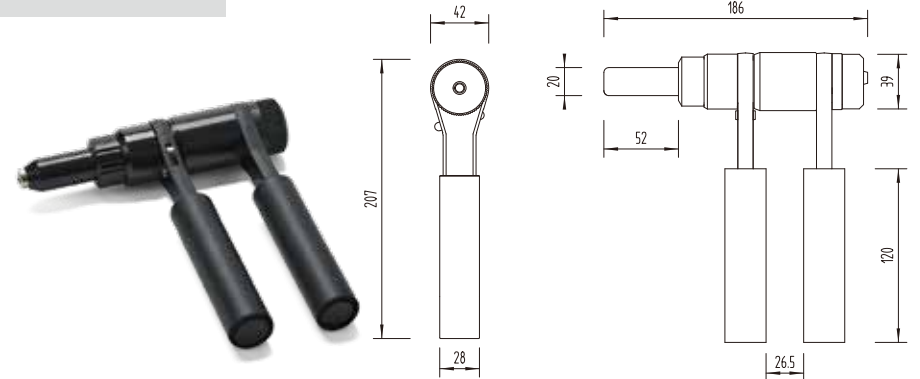
Protection cover is very important to be mounted on tool during setting!



No.	Art code	Description	Qty/tool	No.	Art code	Description	Qty/tool
1	L23002H00	Screw cover	1	8	B01219H00	Packaging for nosepieces	1
2	L23073H00	Rubber ring(red)	1	9	L20475H00	Black grip	2
3	Z62010H00	Nosepiece assembly(6.4)	1	10	L23025H00	Switch	1
4	Z62012H00	Jaws shell (6.4)	1	11	Z62011H00	Nosepiece assembly(5.0)	1
5	L64045H00	Rubber 3-jaws(6.4)	1	12	Z62013H00	Jaws shell (5.0)	1
6	Z21105H00	Body assembly	1	13	L64046H00	Rubber 3-jaws(5.0)	1
7	L23056H00	Rear cover	1	14	L62009H00	Protection cover	1

*Quick parts in shadow, No.11-13are optional parts

GO-12-P



Standard Equipment:



For ϕ 6.4

Optional Parts::



For ϕ 5.0

Parameters:

Stroke: 22mm

Capacity: Up to 6.4mm
Pin and Collar

Tool Net weight: 1Kg

Qty per Ctn: 10pcs

Volume:
54×48×27cm

Gross Weight: 15Kg



How to operate:



Before release the rest mandrel, turn the switch on



Pull open / join the handles for setting rivet



One hand clockwise turn the handle



Until the rivet break, then, stop moving the handle



Pour-out the rest mandrel



How to change Accessories



Parts change according to following procedure

- initial position, turn the switch up like show on picture ①
- Turn the handle in reverse clockwise by singlehand to automatic fixation
- Change parts
- Spare parts-☒



During change, please mount/un-mount parts in accordance to below pictures

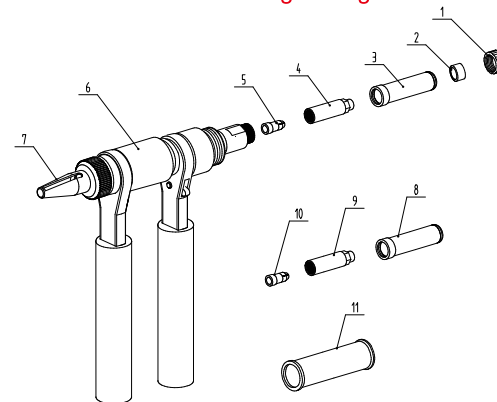
① Unscrew the screw cover

② Take out the nosepiece and rubber ring

③ Screw off the jaws-shell, take out rubber 3-jaws



Protection cover is very important to be mounted on tool during setting!



No.	Code	Description
1	L23002H00	Screw cover
2	L23003H00	Rubber ring
3	Z62010H00	Nosepiece (6.4)
4	Z62012H00	Jaws shell (6.4)
6	Z21105H00	Body assembly
7	L62009H00	Protection cover
8	B01219H00	Spare parts pack
9	Z62011H00	Nosepiece (5.0)
10	Z62013H00	Jaws shell (5.0)
11	L64046H00	Rubber jaws (5.0)

Troubleshooting

Nut Tool GO-12-N

Failure Mode	Possible Cause(s)	Solution(s)
1.Rivet nut can't go in or out	1.Wrong mandrel chosen 2.Impurity in the threads of mandrel 3.Wrong rivet nut	1.Change mandrel 2.Use copper brush to clean 3.Change rivet nut
2.Mandrel grip nut not tight	Mandrel abrasion	Change mandrel
3.Insufficient deformation of nut	Wrong position of nut mounting	Adjust according to manual

Rivet Tool GO-12-R

Failure Mode	Possible Cause(s)	Solution(s)
1.Unable to insert rivet	1.Jaws not open, nosepiece not mount correctly 2. Wrong nosepiece 3. Rest mandrel stuck 4.Burrs between nosepiece and push pin	1.Adjust according to manual 2.Change nosepiece 3.Disassemble nosepiece assembly, use Ø3 steel wire to push out 4.Change nosepiece, clean with round file
2.mandrel not break	3-jaws(7)worn	1.change 3-jaws
3.rivet can not be gripped	1.3-jaws(7)worn 2.Nosepiece spring(10)elastic fatigue 3.Impurity between the threads of 3-jaws(7)	1.Change 3-jaws 2.Change nosepiece spring 3.Clean

Pind an Collar Tool GO-12-P

Failure Mode	Possible Cause(s)	Solution(s)
1.Rivet can not be inserted	1.Jaws not open 2.Incorrected nosepiece 3.Blurs on the jaws shel	1. Adjust connect part 2. Change nosepiece 3. Scrap the blurs by grater, change jaws shell
2.Rivet not break	Jaws worn up	1. Change jaws
3.Not clamp rivet	Jaws worn up or rubbish on jaws	Change jaws or clean the jaws

Services

1.The tools damage due to wrong use against manual is not under warranty.

2. Warranty is 12 months from the date of invoice. In case tool not working properly (due to problem tool itself), within warranty, GOEBEL is responsible for changing spare parts to make tools work. The tool need to be returned as complete packed. Returning parts only is not accepted.

3. If any questions regarding quality and how to use, please contact local distributor and/or GOEBEL.

