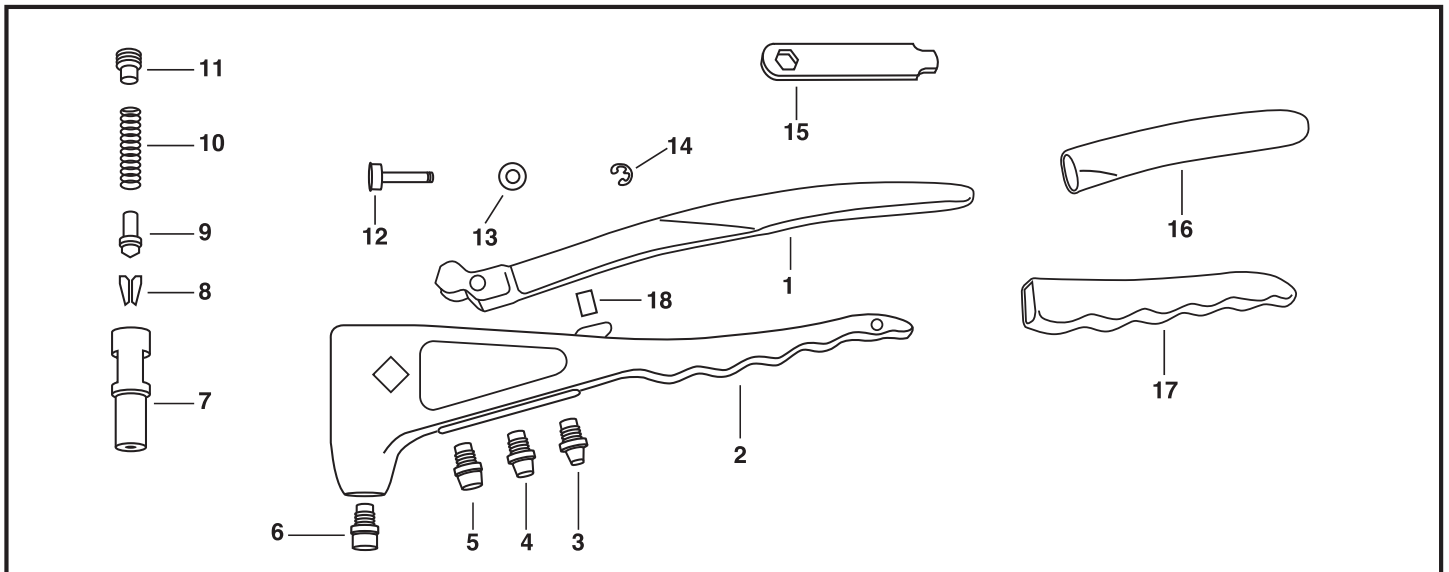


GOEBEL GO-55 Industrial HAND RIVET TOOL

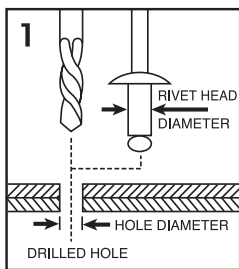
PARTS LIST



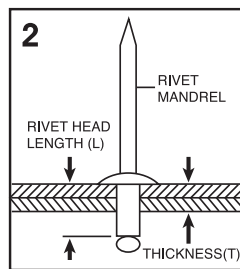
NO.	PART NO.	PART NAME	NO.	PART NO.	PART NAME
1	GO-55-01	UPPER HANDLE	12	GO-55-12	FULCRUM PIN
2	GO-55-02	ALUMINUM BODY	13	GO-55-13	FULCRUM PIN BEARING
3	GO-55-03	NOSEPIECE, 2.4mm or 3/32"	14	GO-55-14	SNAP RING
4	GO-55-04	NOSEPIECE, 3.0/3.2mm or 1/8"	15	GO-55-15	WRENCH
5	GO-55-05	NOSEPIECE, 4.0mm or 5/32"	16	GO-55-16	UPPER GRIP
6	GO-55-06	NOSEPIECE, 4.8/5.0mm or 3/16"	17	GO-55-17	LOWER GRIP
7	GO-55-07	JAW CASE	18	GO-55-18	SHOCK ABSORBER
8	GO-55-08	JAWS (2-PC TYPE)			
9	GO-55-09	JAWS PUSHER			
10	GO-55-10	JAWS PUSHER SPRING			
11	GO-55-11	RETAINING SCREW			

NOTES: Please order parts by Part Number and Part Name. Keep all moving parts oiled.

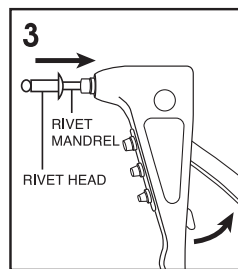
OPERATION INSTRUCTION



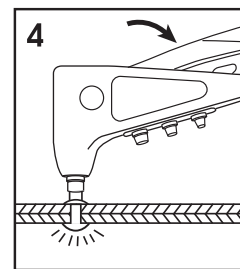
Select appropriate Rivet for application and drill same size hole through materials to be fastened.



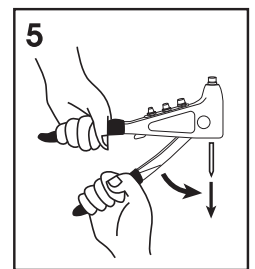
Select Rivet Head Length (L) based on the combined thickness (T) of materials to be fastened. It is suggested $L - T \geq 4.0\text{mm}$ or $0.16"$.



Open Tool Handle fully and insert Rivet Mandrel all the way into Tool Nosepiece, then insert Rivet Head into the drilled hole completely.

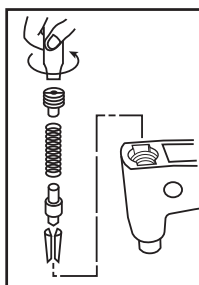


Squeeze Tool Handle until Rivet Mandrel breaks off. If more than one squeeze is required, open Tool Handle fully and squeeze again.

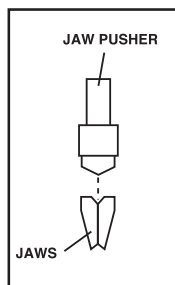


Finally open Tool Handle fully to eject Rivet Mandrel from Tool.

HOW TO CHANGE JAWS, ETC. PARTS



1. Close Tool Handles completely.
2. Remove Retaining Screw with Wrench, then remove Jaw Pusher Spring, Jaw Pusher and Jaws from Jaw Case.
3. Clean or replace Jaws, lubricating outside of Jaws with light machine oil before re-assembly.



4. Reverse the above steps to reassemble, making sure that bevelled end of Jaw Pusher fits into the bevel provided by the Jaws.

WARNINGS

