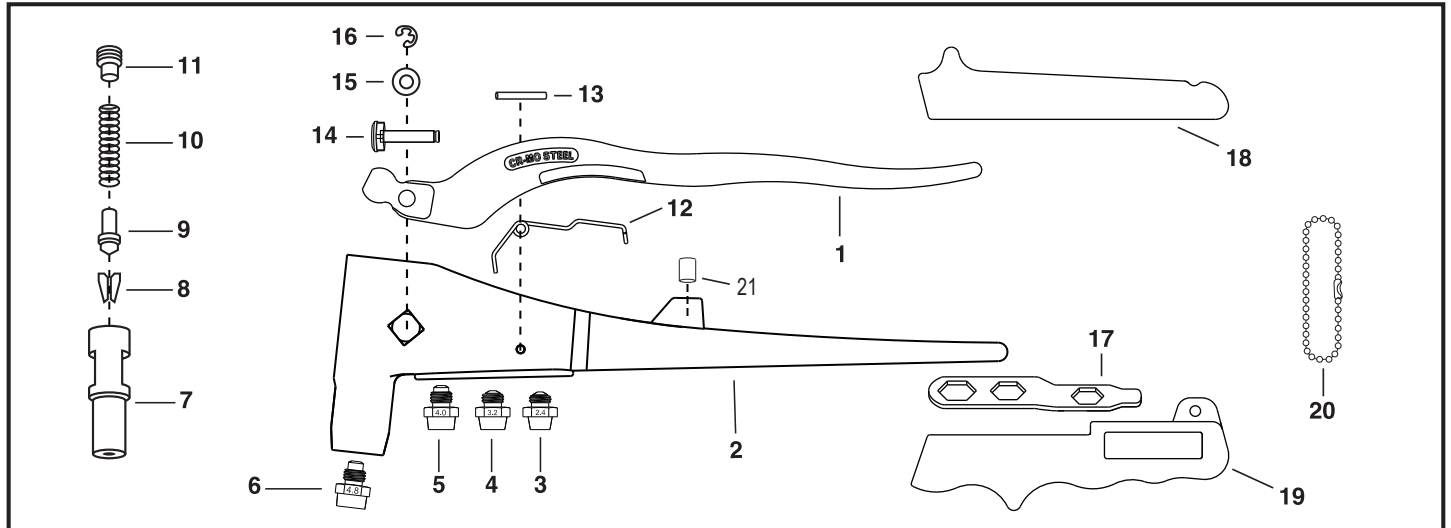


GOEBEL GO-3 Industrial HAND RIVET TOOL

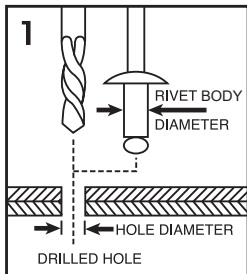
■ PARTS LIST



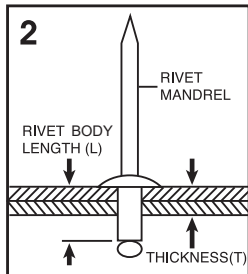
NO.	PART NO.	PART NAME	NO.	PART NO.	PART NAME
1	GO-3-01	UPPER HANDLE	12	GO-3-12	TORSION SPRING
2	GO-3-02	ALUMINUM BODY	13	GO-3-13	TORSION SPRING PIN
3	GO-3-03	NOSEPIECE, 2.4mm or 3/32"	14	GO-3-14	FULCRUM PIN
4	GO-3-04	NOSEPIECE, 3.0/3.2mm or 1/8"	15	GO-3-15	FULCRUM PIN BEARING
5	GO-3-05	NOSEPIECE, 4.0mm or 5/32"	16	GO-3-16	SNAP RING
6	GO-3-06	NOSEPIECE, 4.8/5.0mm or 3/16"	17	GO-3-17	WRENCH
7	GO-3-07	JAW CASE	18	GO-3-18	UPPER GRIP
8	GO-3-08	JAWS (2-PC TYPE)	19	GO-3-19	LOWER GRIP
9	GO-3-09	JAW PUSHER	20	GO-3-20	BEAD CHAIN LOCK
10	GO-3-10	JAW PUSHER SPRING	21	GO-3-21	SHOCK ABSORBER
11	GO-3-11	RETAINING SCREW			

NOTES: Please order parts by Part Number and Part Name. Keep all moving parts oiled.

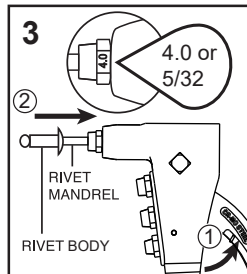
■ OPERATION INSTRUCTIONS



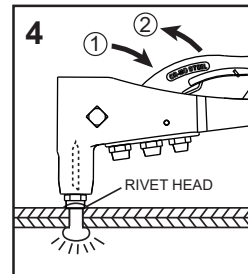
Select appropriate Blind Rivet for application, punch or drill same size or a little bigger (0.1mm, 0.004") hole through materials to be fastened.



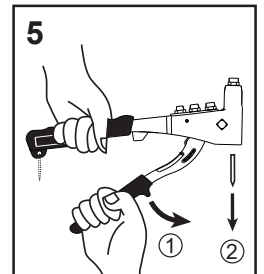
Select Rivet Body Length (L) based on the combined thickness (T) of materials to be fastened. It is suggested $L-T \geq 4.0\text{mm}$ or $0.16"$.



Open Upper Handle fully ①, choose same marked size Nosepiece, for example 4.0 mm or 5/32", and screw into Working Nose and insert Rivet Mandrel all the way into Working Nosepiece ②.

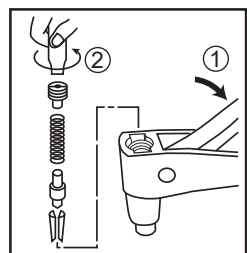


Insert Rivet Body into the prepared hole completely, press Working Nosepiece to touch Rivet Head. Squeeze Upper Handle ① until Rivet Mandrel breaks off and materials are well fastened. If more than one squeeze is required, open Upper Handle fully ② and squeeze again ①.

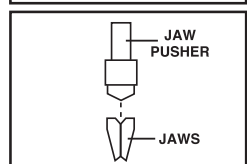


Finally open Upper Handle fully ① to eject Spent Mandrel ② from Tool, either from Working Nosepiece or from upper side.

■ HOW TO CHANGE JAWS ETC. PARTS



1. Close Tool Handles completely ①.
2. Remove Retaining Screw with Wrench ②, then remove Jaw Pusher Spring, Jaw Pusher and Jaws from Jaw Case.
3. Clean or replace Jaws, lubricating outside of Jaws with light machine oil before re-assembly.



4. Reverse the above steps to reassemble, making sure that the bevelled end of Jaw Pusher fits into the bevel provided by the Jaws.

■ RIVETING CAPACITY

Rivet Diameter	Ø 2.4mm	Ø 3.0/3.2mm	Ø 4.0mm	Ø 4.8/5.0mm
	Ø 3/32"	Ø 1/8"	Ø 5/32"	Ø 3/16"
Aluminum	●	●	●	●
Steel	●	●	●	●
Stainless Steel / Inox	●	●	●	●

WARNING For SAFETY WORK, ALWAYS WEAR SAFETY GOGGLES. Tool must be clear off all Spent Mandrels before setting next Blind Rivet.