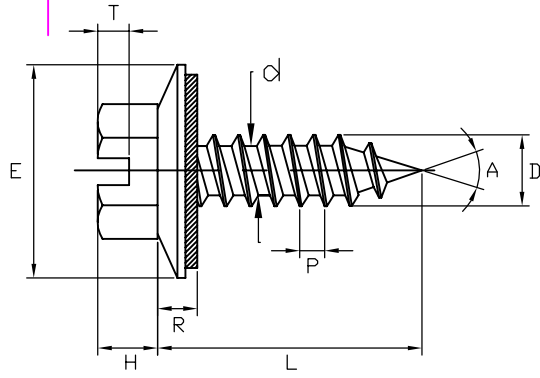
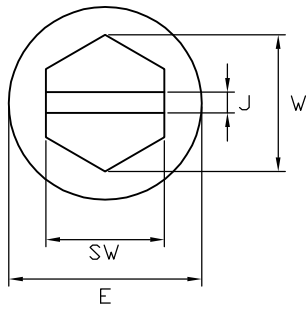


1 | 2 | 3 | 4

A



B

DIN 7976, 4,8x16MM,  
 HEXAGON HEAD SELF TAPPING SCREW,  
 WITH SLOT, SHARP SHAPED HEAD,  
 STAINLESS STEEL A4, GL SILVER COATED,  
 WITH ASSEMBLED STAINLESS STEEL (A4) EPDM WASHER R 12

C

DIMENSIONS	mm	
ACROSS FLATS (SW)	7,88 - 8,00	
ACROSS CORNERS (W)	MIN. 8,71	
HEAD HEIGHT (H)	3,3 - 3,6	
SLOT WIDTH (J)	1,26 - 1,51	
SLOT DEPTH (T)	1,2 - 1,6	
MAJOR DIAMETER (D)	4,62 - 4,80	
MINOR DIAMETER (d)	3,43 - 3,58	
PITCH (P)	1,6	
LENGTH (L)	16,0 +/-0,8	
POINT ANGLE (A)	45° +/-5°	
OUTSIDE DIAMETER EPDM WASHER (E)	12,0	
THICKNESS EPDM WASHER (R)	3,0	
SURFACE	GL SILVER COATED	
MATERIAL	STAINLESS STEEL A4/AISI316	

D

E

F

customer Nr.:	production Nr.:	Tolerances according to ISO 4759-1, all dimensions in mm, Acceptance inspection according to ISO 3269			
drawn M. Weyand	checked G. Kramme	approved by - date M. Goebel	Name of file 2050448161	date 2011-04-07	scale no scale
GOEBEL GMBH			2050448161		
			922	DRAWING Nr.:	Version REV0